

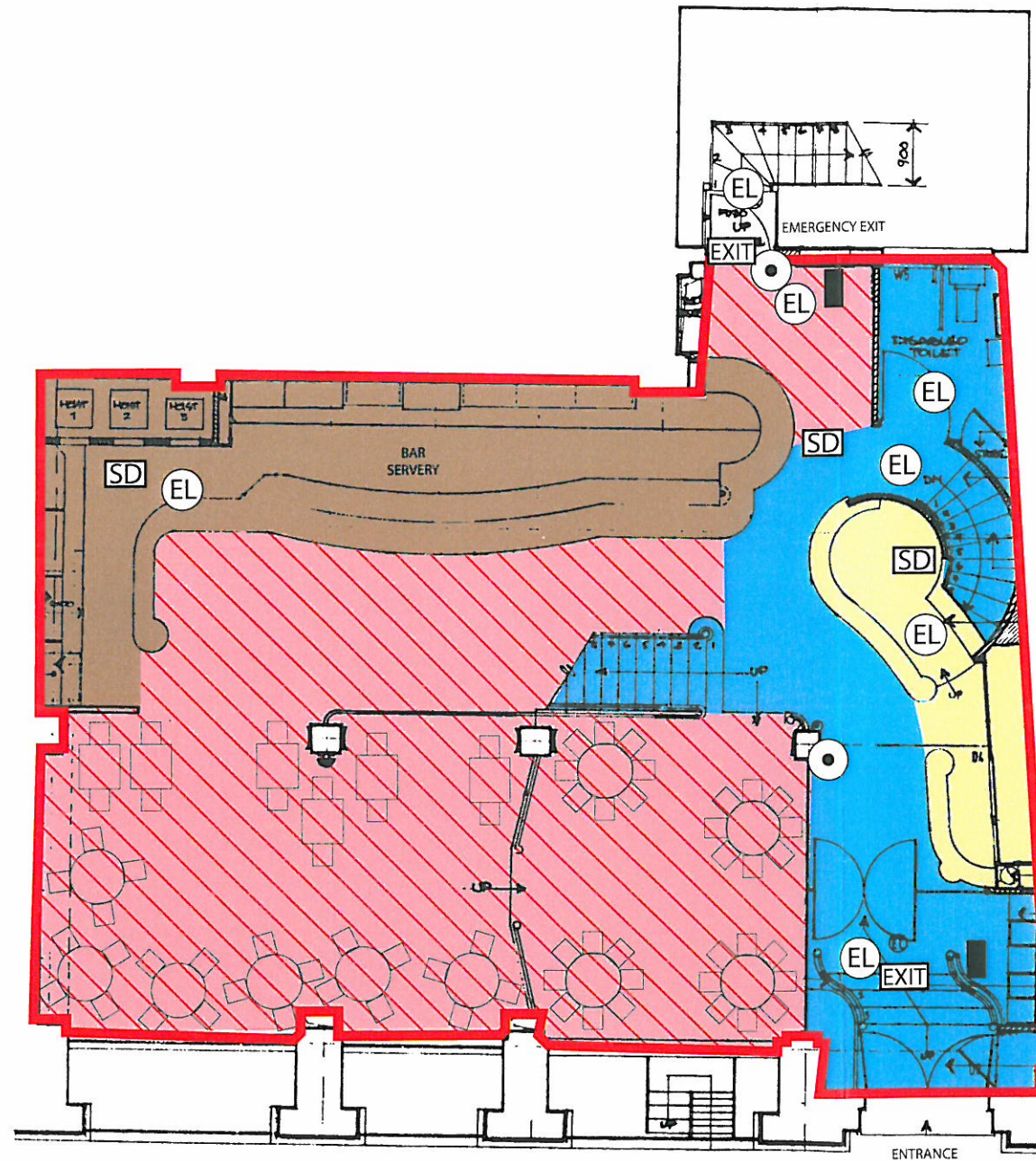
red line	ambit lic	d premises
red	restaurant licensed area	
brown	dispense bar and liquor store	
blue	WC and passageways	
yellow	kitchen and staff areas	

(FB)	fire blanket
[Water Extinguisher]	water extinguisher
[CO2 Extinguisher]	CO2 extinguisher
[Foam Extinguisher]	foam extinguisher
[SD]	smoke detector
[HD]	heat detector
[EXIT]	emergency exit
(EL)	emergency lights
(•)	break glass unit

ETRUSCA GROUP	Client
CARAVAGGIO	Job title
DRAWINGS: 3 - RESTAURANT	
MEZZANINE	
229/05	Job No.
1:100	Scale

image machinery

image machinery
8 moorgate
london ec2r 6da
020 7796 4216
www.imagemachinery.com



red line	ambit	sed premises
red hatch	bar licensed area	
red	restaurant licensed area	
brown	dispense bar and liquor store	
blue	WC and passageways	
yellow	kitchen and staff areas	

(FB)	fire blanket
[Water Extinguisher]	water extinguisher
[CO2 Extinguisher]	CO2 extinguisher
[Foam Extinguisher]	foam extinguisher
[SD]	smoke detector
[HD]	heat detector
[EXIT]	emergency exit
(EL)	emergency lights
(•)	break glass unit

ETRUSCA GROUP Client

CARAVAGGIO Job title

DRAWINGS: 3 - RESTAURANT

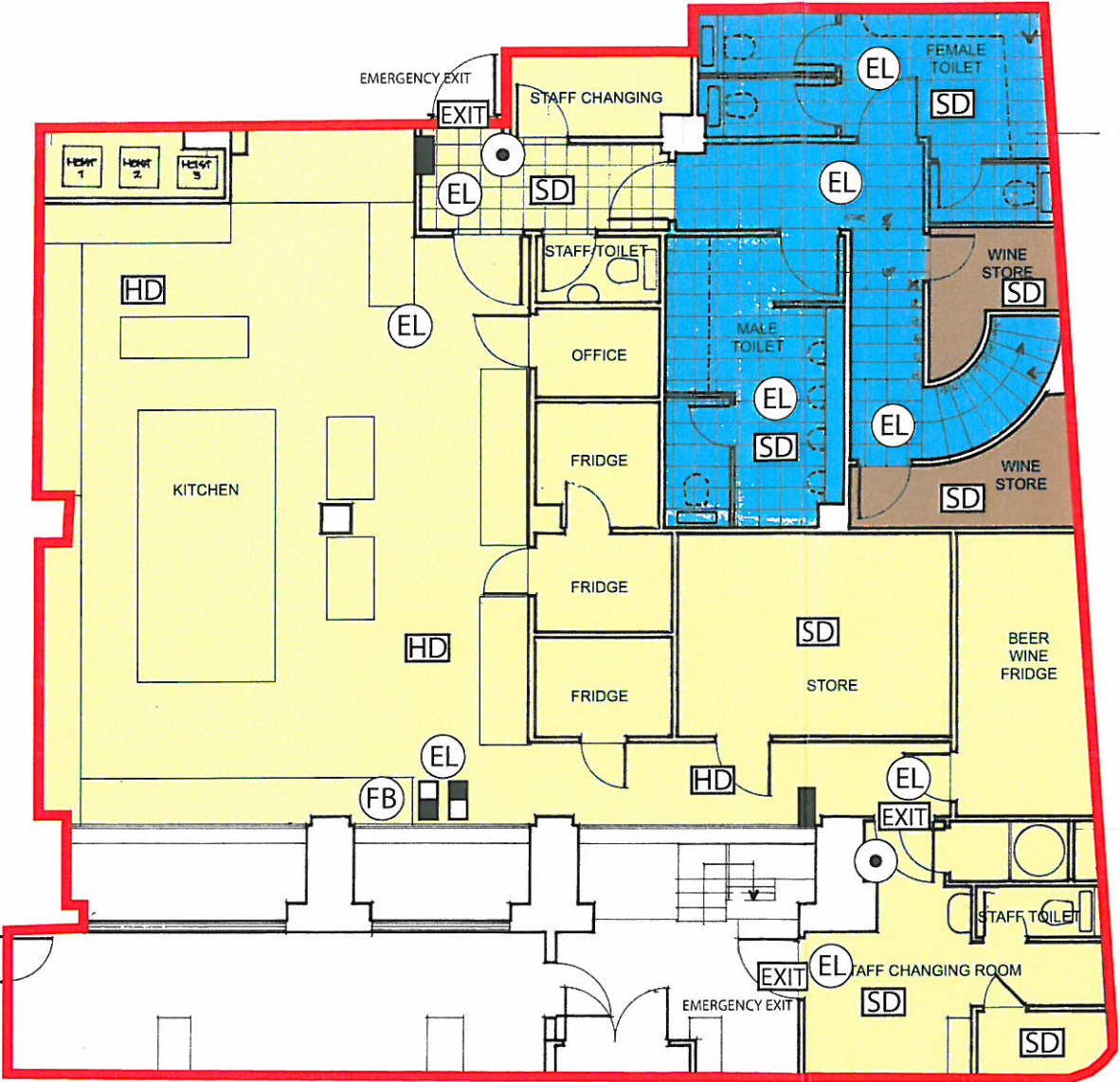
GROUND FLOOR

230/05 Job No.

1:100 Scale

image machinery

image machinery
8 moorgate
london ec2r 6da
020 7796 4216
www.imagemachinery.com



- | | | |
|----------|-------------------------------|------------|
| red line | ambit lic | d premises |
| brown | dispense bar and liquor store | |
| blue | WC and passageways | |
| yellow | kitchen and staff areas | |
-
- | | |
|------|--------------------|
| Ⓡ | fire blanket |
| ■ | water extinguisher |
| ■ | CO2 extinguisher |
| ■ | foam extinguisher |
| SD | smoke detector |
| HD | heat detector |
| EXIT | emergency exit |
| EL | emergency lights |
| ● | break glass unit |

ETRUSCA GROUP	Client
CARAVAGGIO	Job title
DRAWINGS: 3 - RESTAURANT	
BASEMENT	
231/05	Job No.
1:100	Scale

image machinery

image machinery
8 moorgate
london ec2r 6da
020 7796 4216
www.imagemachinery.com